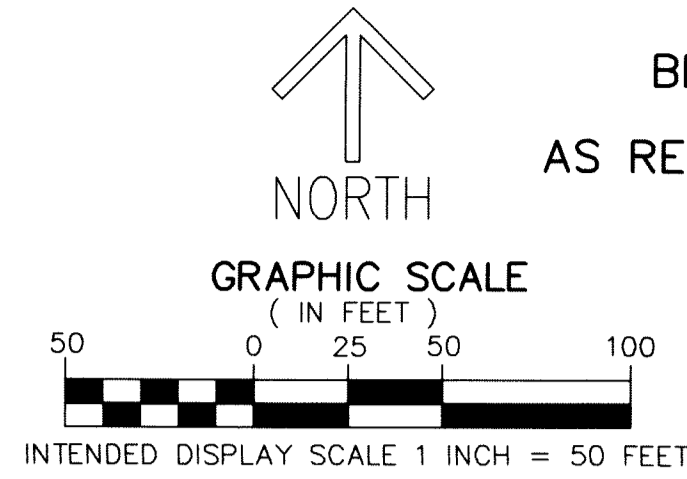


# JOHNS GLADES WEST MXPD

BEING A REPLAT OF A PORTION OF TRACTS 105, 106, 107, 108, 109, 116, 117, 118, 119 AND 120, BLOCK 77,  
PALM BEACH FARMS COMPANY PLAT NO. 3  
AS RECORDED IN PLAT BOOK 2, PAGES 45 THROUGH 54, OF THE PUBLIC RECORDS OF PALM BEACH COUNTY, FLORIDA,  
LYING IN SECTIONS 18 AND 19, TOWNSHIP 47 SOUTH, RANGE 42 EAST, PALM BEACH COUNTY, FLORIDA



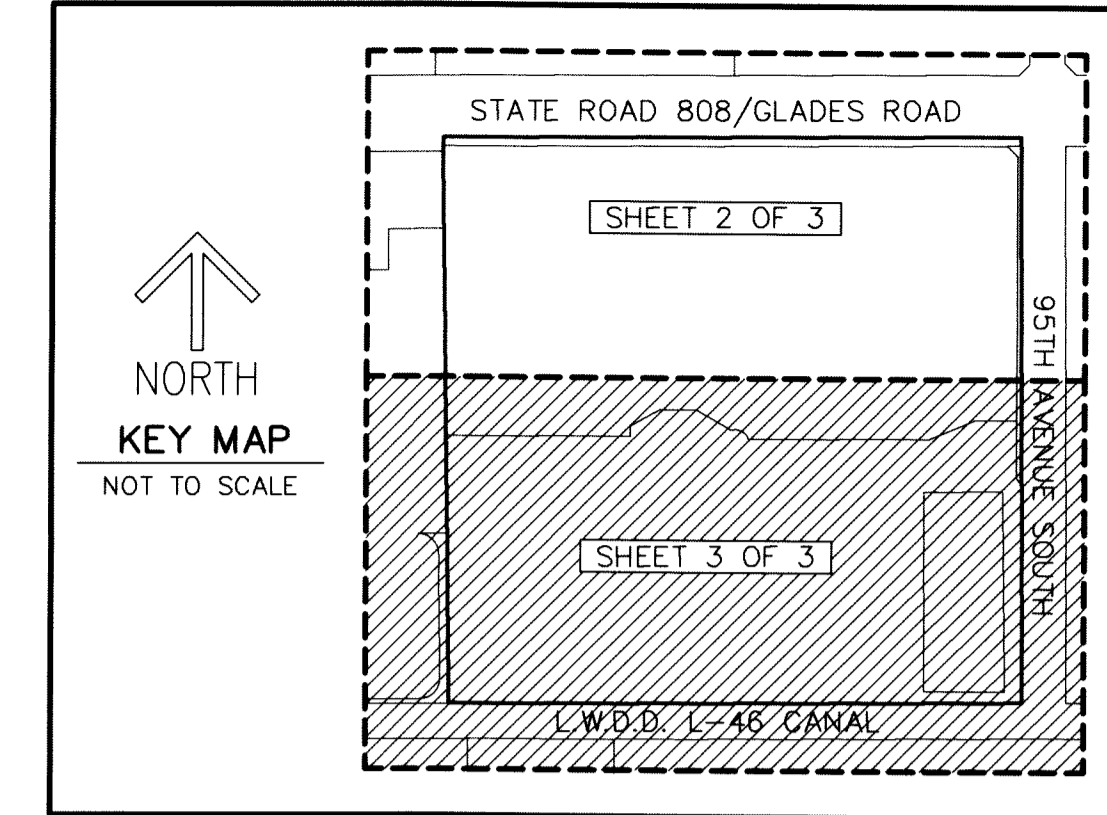
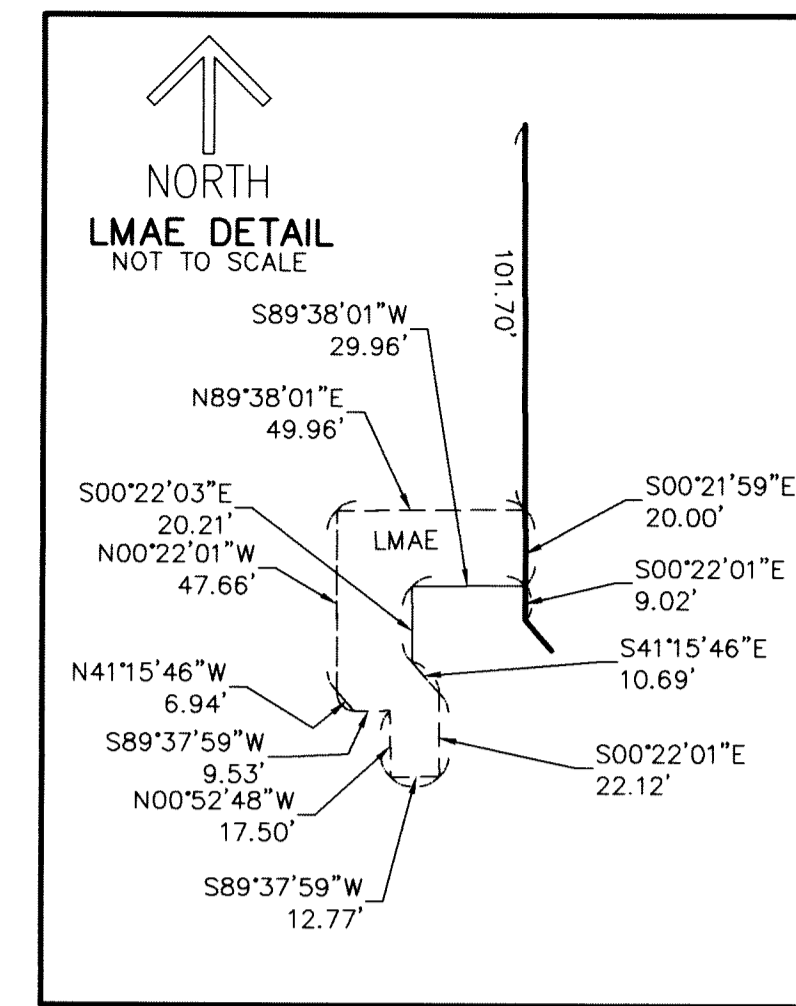
THIS INSTRUMENT PREPARED BY  
DAVID P. LINDLEY  
OF  
**CAULFIELD and WHEELER, INC.**  
SURVEYORS - ENGINEERS - PLANNERS  
7900 GLADES ROAD, SUITE 100  
BOCA RATON, FLORIDA 33434 - (561)392-1991  
CERTIFICATE OF AUTHORIZATION NO. LB3591

### LEGEND/ABBREVIATIONS

- CL - CENTERLINE
- Δ - DELTA (CENTRAL ANGLE)
- CB - CHORD BEARING
- CD - CHORD DISTANCE
- E - EASTING WHEN USED WITH COORDINATES
- FPL - FLORIDA POWER AND LIGHT COMPANY
- L - ARC LENGTH
- LB - LICENSED BUSINESS
- LAE - LIMITED ACCESS EASEMENT
- LMAE - LAKE MAINTENANCE ACCESS EASEMENT
- LME - LAKE MAINTENANCE EASEMENT
- L.W.D.D. - LAKE WORTH DRAINAGE DISTRICT
- MXPD - MIXED USE PLANNED DEVELOPMENT
- N - NORTHING WHEN USED WITH COORDINATES
- O.R.B. - OFFICIAL RECORD BOOK
- R - RADIUS
- UE - UTILITY EASEMENT
- (P) - FESTIVAL SHOPPES OF BOCA RATON (PLAT BOOK 69, PAGES 172-174)
- PRM - DENOTES PERMANENT REFERENCE MONUMENT 4" X 4" X 24" CONCRETE MONUMENT WITH ALUMINUM DISK STAMPED "C&W PRM LB3591"
- △ - PALM BEACH COUNTY CONTROL POINT

### NOTES COORDINATES, BEARINGS AND DISTANCES

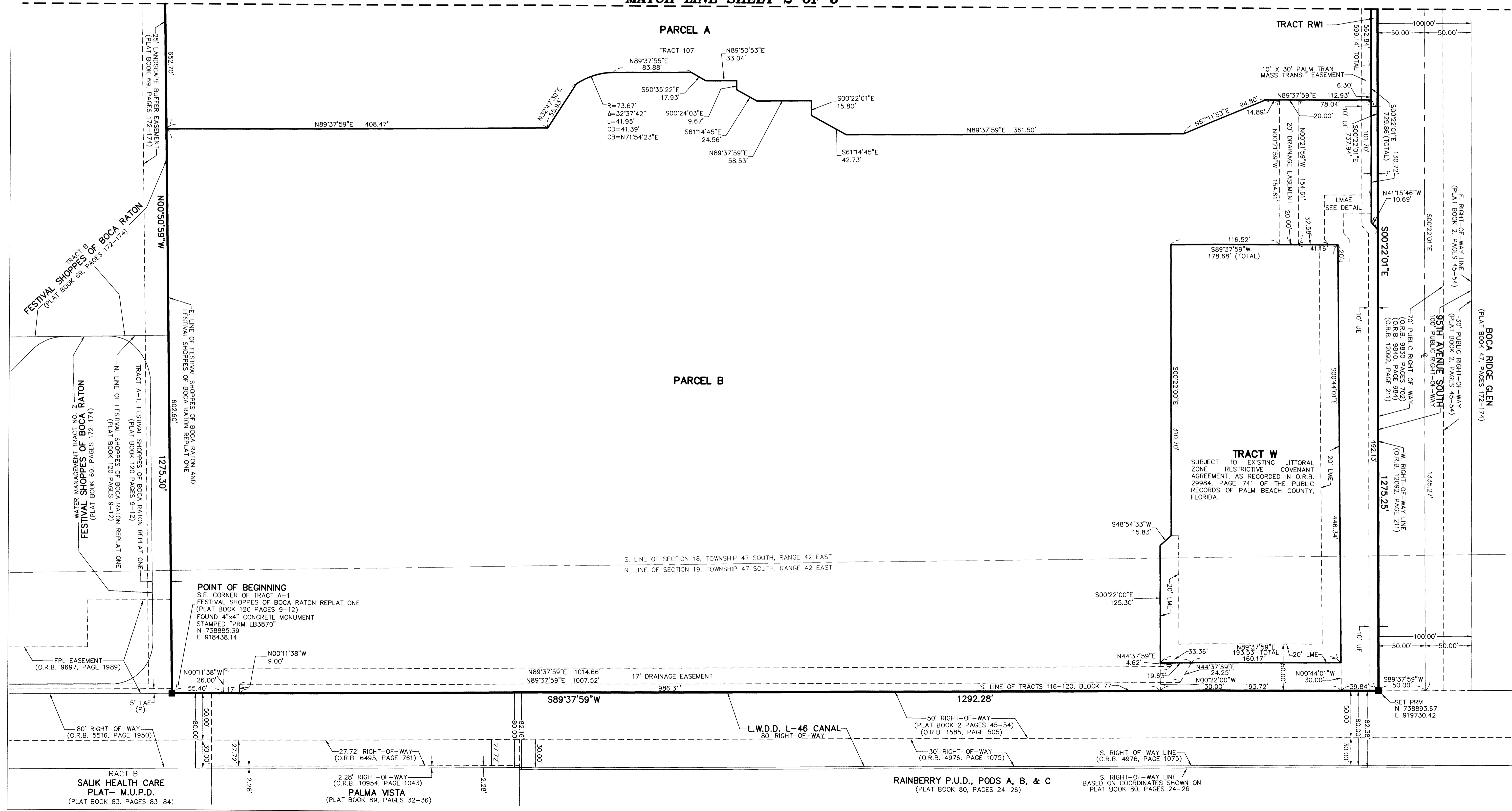
COORDINATES SHOWN ARE GRID  
DATUM = NAD 83 (90 ADJUSTMENT)  
ZONE = FLORIDA EAST  
LINEAR UNIT = US SURVEY FEET  
COORDINATE SYSTEM 1983 STATE PLANE  
TRANSVERSE MERCATOR PROJECTION  
ALL DISTANCES ARE GROUND UNLESS OTHERWISE NOTED  
SCALE FACTOR = 1.0000192  
GROUND DISTANCE X SCALE FACTOR = GRID DISTANCE  
BEARINGS AS SHOWN HEREON ARE GRID DATUM,  
NAD 83 (90 ADJUSTMENT), FLORIDA EAST ZONE.



40

SHEET 3 OF 3

### MATCH LINE SHEET 2 OF 3



**POINT OF BEGINNING**  
S.E. CORNER OF TRACT A-1  
FESTIVAL SHOPPES OF BOCA RATON REPLAT ONE  
(PLAT BOOK 120 PAGES 9-12)  
FOUND 4" X 4" CONCRETE MONUMENT  
STAMPED "PRM LB3870"  
N 738885.39  
E 918438.14

**TRACT W**  
SUBJECT TO EXISTING LITTORAL  
ZONE RESTRICTIVE COVENANT  
AGREEMENT, AS RECORDED IN O.R.B.  
29984, PAGE 741 OF THE PUBLIC  
RECORDS OF PALM BEACH COUNTY,  
FLORIDA.

TRACT B  
**SALIK HEALTH CARE**  
PLAT - M.U.P.D.  
(PLAT BOOK 83, PAGES 83-84)

2.28' RIGHT-OF-WAY  
(O.R.B. 10954, PAGE 1043)  
**PALMA VISTA**  
(PLAT BOOK 89, PAGES 32-36)

**RAINBERRY P.U.D., PODS A, B, & C**  
(PLAT BOOK 80, PAGES 24-26)

S. RIGHT-OF-WAY LINE  
BASED ON COORDINATES SHOWN ON  
PLAT BOOK 80, PAGES 24-26